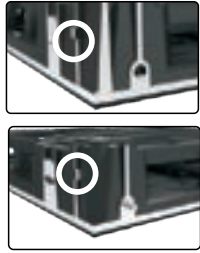


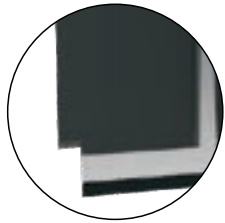
04

Some other friendly design

Chamfer on each side of panel to guarantee the flatness.

**05**

The terraced design to protect the lamp on the corners.

**06**

Specifications

Part Number

	RW2/RW3	RM3/RM4
Pixel pitch	2.8/3.9mm	3.9/4.8mm
LED type	SMD2121(Black)	SMD2121/1921(Black)
Pixel configuration	1R1G1B	1R1G1B
Size of module	250mmx250mm	250mmx250mm
Resolution of module	88x88/64x64	64x64/52x52
Density	123904/65536dots/m ²	65536/43264 dots/m ²
Cabinet material	Alu	Alu
Size of cabinet(WxH)	500mmx500mm	500mmx500mm
Weight of cabinet	5.5Kg	7.3Kg
Colors	16.7M	16.7M
Gray scale	14Bits	14Bits
Driving method	1/22, 1/16 scanning	1/16, 1/9 scanning
Refresh frequency	3840Hz	3840Hz
Control method	Synchronization	Synchronization
Driving device	Constant current	Constant current
Brightness	900cd/m ²	3000/4000cd/m ²
IP grade	IP30	IP65

KING SHOW

RW

RM



NEW RENTAL SOLUTIONS

500mm × 500mm



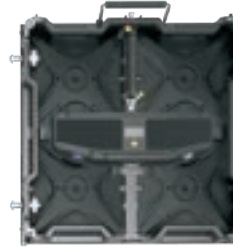
(INDOOR)

(OUTDOOR)

King show series

01

Super Light



(indoor)

5.5KG each panel



(outdoor)

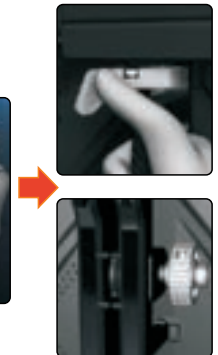
7.3KG each panel

Easy to set up and dismantle

02

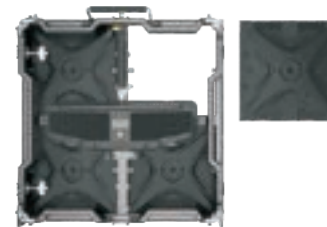
Installation by one person with one hand.

1. Mount the panel on the hanging bar only with one hand;
2. Use the hanger on the top of each panel, when mounting the second row of LED panel;
3. Leave both hands free for fastening the LED panels;
4. Easy and fast locks for quick dismantling.



03

Easy to maintain



Modules with magnet for quick change from the back



Independent power supply with box for easy maintenance